

That Plant Fucker



August 2019

Harvest Toys

corn dolly
corn dolly
not really corn

feed us full
leave us hull

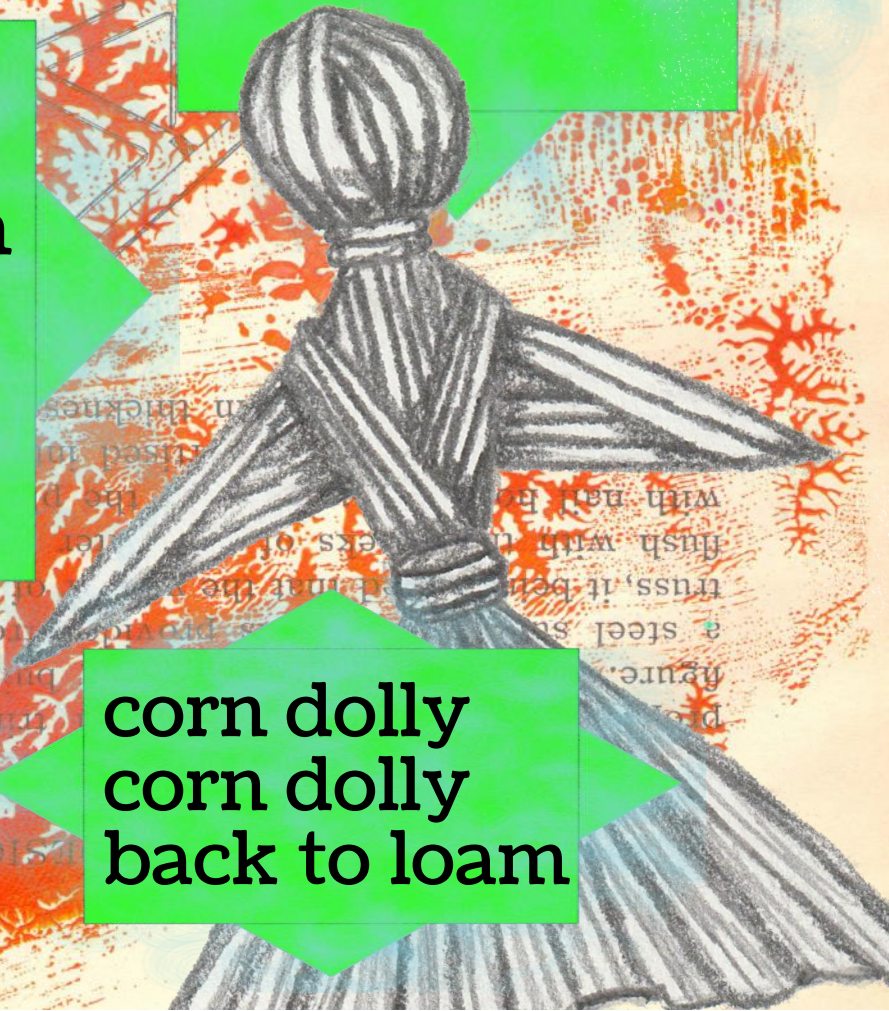
corn dolly
corn dolly
not really corn

spirit home
spirit poem

corn dolly
corn dolly
not really corn

sow
grow
mow
hoe

corn dolly
corn dolly
back to loam



Making the Case for Algae



Hello, I'm algae. I am not sexy like an avocado. Not showy like a rose. I can be a tiny diatom or giant sea kelp. I am varied and everywhere. Oh, and we've met before btw.

I can be so much to you. I nourish you; I nourish the plants that nourish you. I clean the toxic sludge you create. I am the unsung hero.

Should I be happy behind the scenes? Look at ginseng and frankincense. They get lots of press and are disappearing from the wild.

When I do get press, it's toxic-algae-bloom this or pond-scum that. So we're not all angels.

I am helpful and hurtful. Isn't modernity about dichotomies and complexity? I am a primordial creature for the modern world.

Seaweed Salad

For Salad

20 grams dry mixed seaweed
(Wakame, Tosaka, Konbu, etc.)
1 tablespoon toasted sesame seeds
1 scallion (finely chopped)

For Dressing

1 tablespoon toasted sesame oil
1 tablespoon soy sauce
1 1/2 tablespoons rice vinegar
1 tablespoon sugar
1/4 teaspoon salt
1/2 teaspoon ginger juice

1. Put the seaweed in a bowl and cover with cold water. Rehydrate for 7 minutes.
2. In a bowl, whisk the dressing ingredients together until the sugar and salt are dissolved.
3. When the seaweed has rehydrated, pour the seaweed into a colander and rinse thoroughly.
4. Squeeze as much water out of the seaweed as you can.
5. Add the rehydrated seaweed to the bowl with the dressing and then add the sesame seeds and scallions. Toss to coat evenly and season to taste.

Rant

In Houston's nearly year-round growing season, now is as close to a fallow time as we get. Not much grows when it's this hot.

It's also too hot to rant. So, in place of my usual thought-provoking essay on a plant-related subject, please enjoy this kitten collage with bubbles.



truss may be considered as cambered or trussed beams securely fastened at the ends of the straining beams h/h . The rafter members are half checked at the apex with their



Shameless plugs

Subscribe to *That Plant Fucker*:

<http://eepurl.com/gr6tUT>

For printed copies, visit my Etsy shop:

<https://www.etsy.com/shop/CometFlower>

faces flush, and the tie-members are spiked on opposite sides of the rafter member. By constructing the truss in this manner, a space equal to the thickness of the rafter